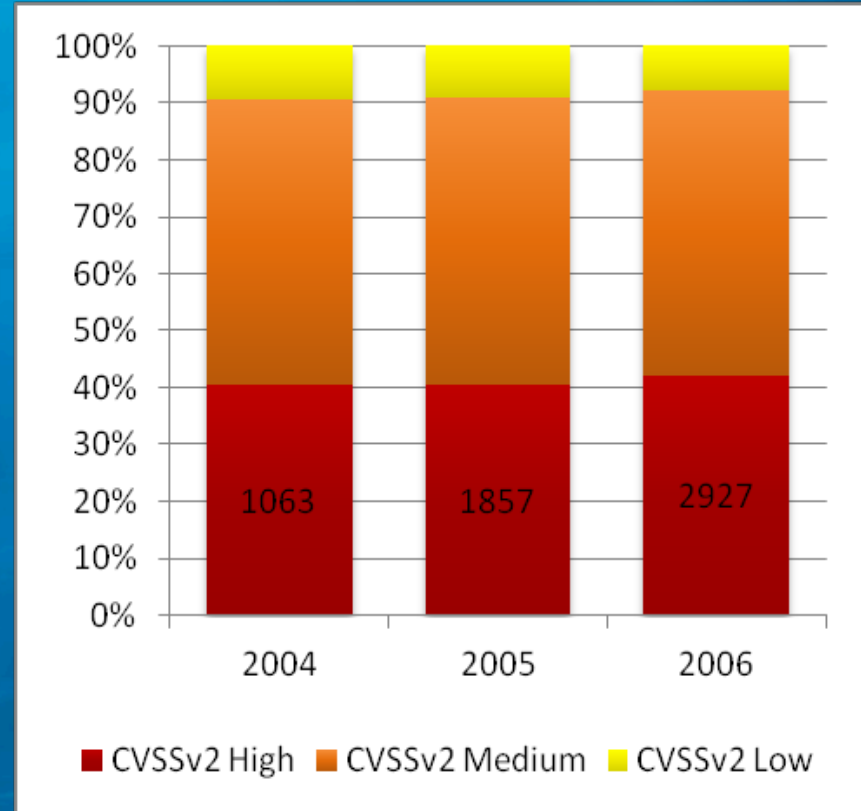
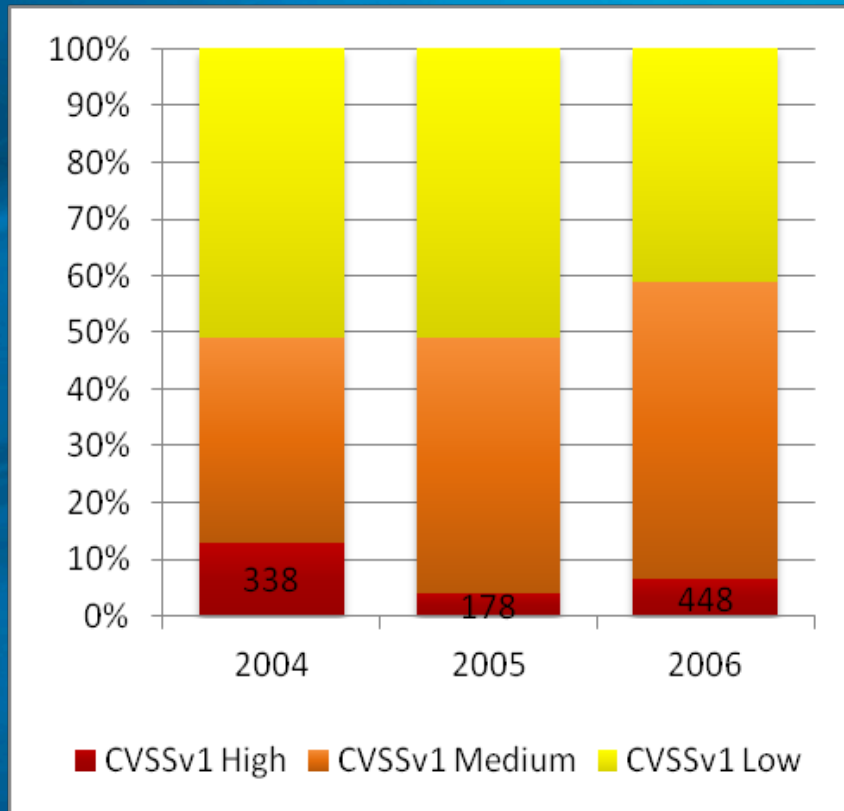


CVSS Severity Analysis

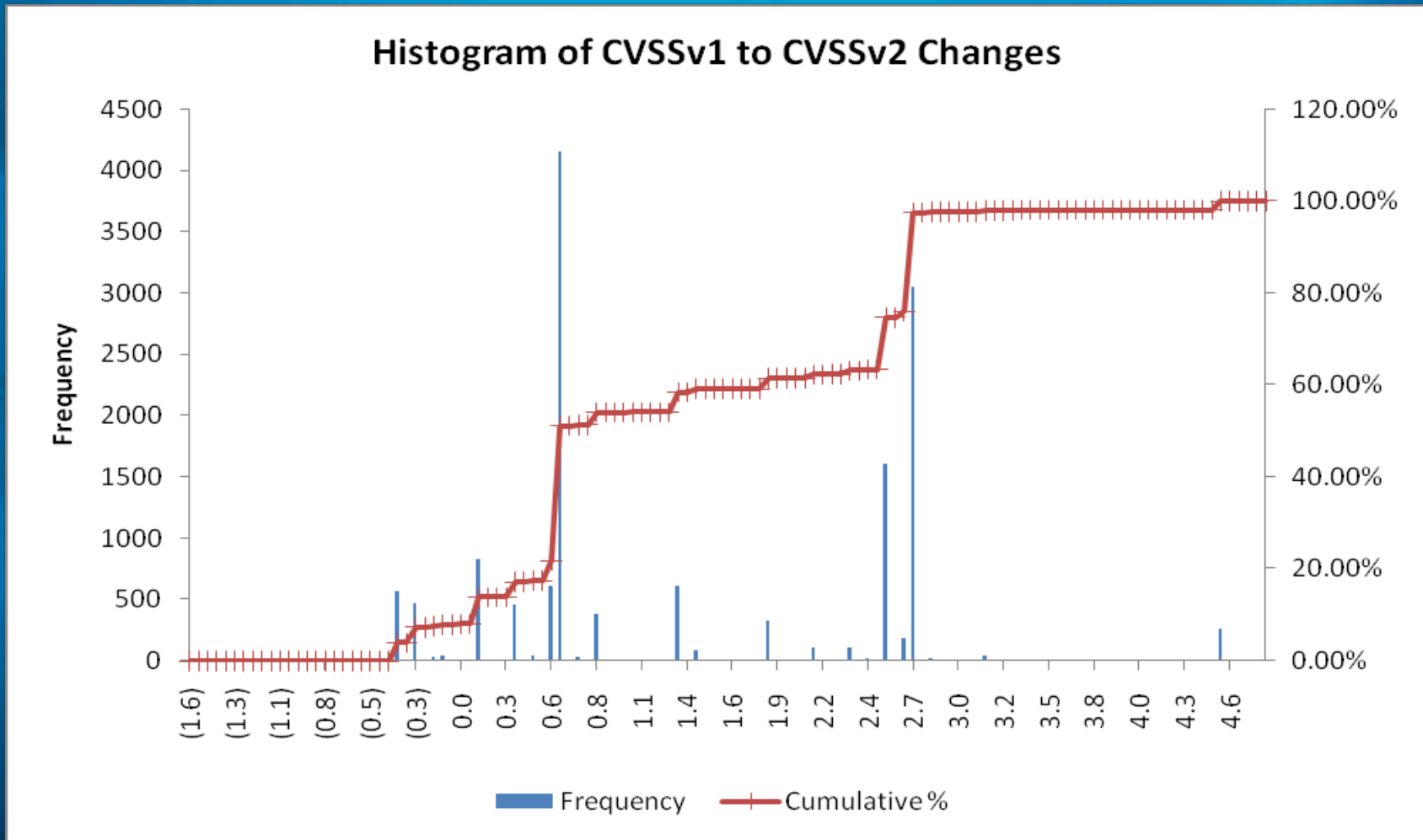
June 23, 2008

Jeff Jones
Director
Microsoft Corporation

CVEs by Severity



Histogram of Changes



Impactful Changes

92% of CVEs received one of these 18 vectors:

CVSS Vector	cvssv1 score	cvssv1 LMH	cvssv2 score	cvssv2 LMH	2004-2006 Count
(AV:N/AC:L/Au:N/C:C/I:C/A:C)	9.9	High	10	High	835
(AV:N/AC:L/Au:N/C:N/I:N/A:C)	3.3	Low	7.8	High	192
(AV:N/AC:L/Au:N/C:P/I:P/A:P)	6.9	Medium	7.5	High	4146
(AV:L/AC:L/Au:N/C:C/I:C/A:C)	6.9	Medium	7.2	High	417
(AV:N/AC:M/Au:N/C:P/I:P/A:P)	5.5	Medium	6.8	Medium	599
(AV:N/AC:L/Au:S/C:P/I:P/A:P)	4.2	Medium	6.5	Medium	106
(AV:N/AC:L/Au:N/C:P/I:P/A:N)	4.6	Medium	6.4	Medium	240
(AV:N/AC:M/Au:N/C:P/I:P/A:N)	3.7	Low	5.8	Medium	109
(AV:N/AC:H/Au:N/C:P/I:P/A:P)	5.5	Medium	5.1	Medium	566
(AV:N/AC:L/Au:N/C:P/I:N/A:N)	2.3	Low	5	Medium	1160
(AV:N/AC:L/Au:N/C:N/I:P/A:N)	2.3	Low	5	Medium	625
(AV:N/AC:L/Au:N/C:N/I:N/A:P)	2.3	Low	5	Medium	1220
(AV:L/AC:L/Au:N/C:P/I:P/A:P)	4.9	Medium	4.6	Medium	420
(AV:N/AC:M/Au:N/C:N/I:P/A:N)	1.8	Low	4.3	Medium	1551
(AV:N/AC:H/Au:N/C:N/I:P/A:N)	1.8	Low	2.6	Low	256
(AV:L/AC:L/Au:N/C:P/I:N/A:N)	1.6	Low	2.1	Low	233
(AV:L/AC:L/Au:N/C:N/I:P/A:N)	1.6	Low	2.1	Low	186
(AV:L/AC:L/Au:N/C:N/I:N/A:P)	1.6	Low	2.1	Low	191

Thoughts

- Generally, I believe the severity increases are appropriate
- However, 40% High Severity is too many – it requires further info for prioritization
- C, I, A values probably need more detailed scoring guidance
 - possibly an additional value considering things like recoverability, scope and other factors